

# 350 DIGITAL BOOKLET SYSTEM

MID-VOLUME BOOKLETMAKER DESIGNED FOR DIGITAL PRINT

Barcode control for personalised documents  
PC for easy programming and operation  
Supports multiple digital presses

*Brochures, Reports, Catalogues,  
Yearbooks, Newsletters, Price Lists*



The 350 Digital Booklet System marries the DSF-2200 Sheet Feeder with the DBM-350 Bookletmaker and Trimmer to create a cost-effective mid-range bookletmaking system ideal for a wide range of applications from mono and colour digital presses.

**Near-line finishing allows:**

A wide variety of digital print to be handled without being tied to one particular legacy of print engine, or reducing the speed of the press to suit the inline finisher as often happens.

Production speeds of typically 2 or 3 times faster than printing speeds, meaning that the work from multiple engines can go through one finishing line.

Production of small and odd-size booklets that can be printed 2-up on a sheet; providing a broader range of finished job and halving print costs.

Scalable architecture. Interchange system components and features as your business grows.

Merging of sheets that have been produced in some separate process.

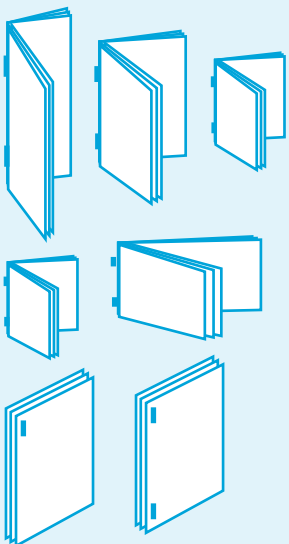
Press usage that is independent of finishing demands or availability.

Job control and security by using barcodes to assure accurate production.

Operation can typically be made by the press operator while also running the press(es).

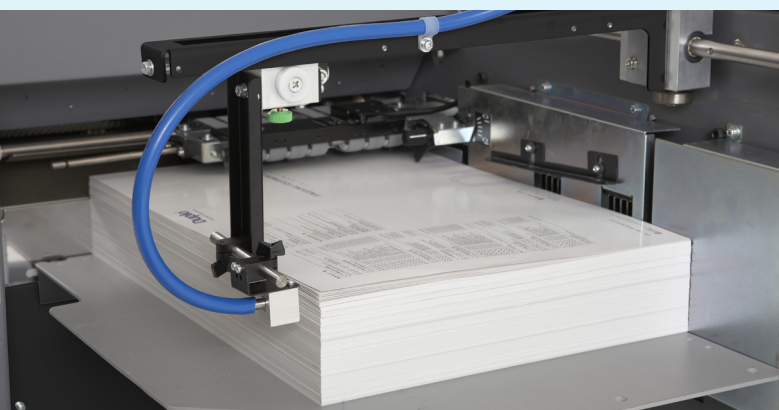
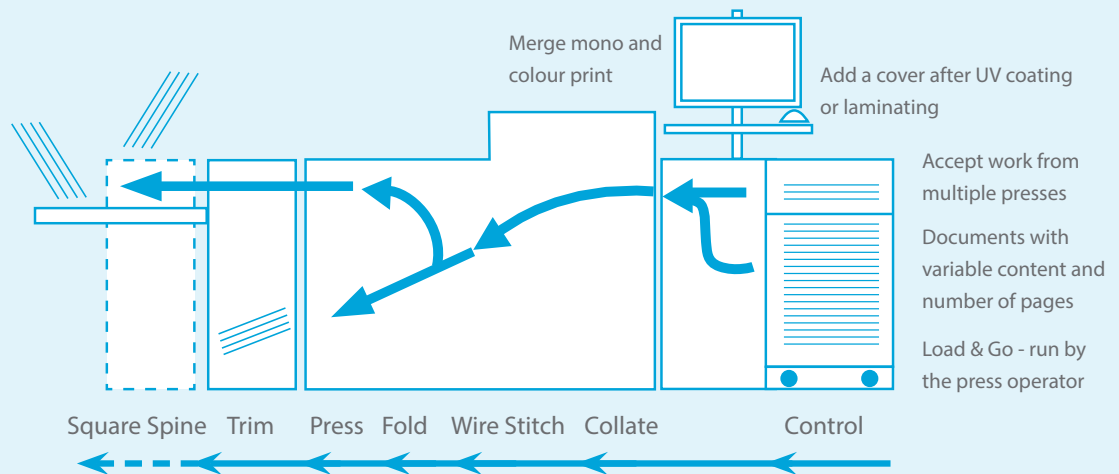
Number of Sheets	A4>A5 Books per hour		A3>A4 Books per hour		With ASM-350
	Self cover	Separate cover	Self cover	Separate cover	
2	2394	2907	2250	2854	Limit 1400
5	1537	1748	1360	1482	Limit 1400
10	969	1020	770	855	Limit 1400
15	741	798	580	645	Limit 1400
20	570	627	400	456	Limit 1400

A wide range of finished document sizes and formats - at faster than press speed

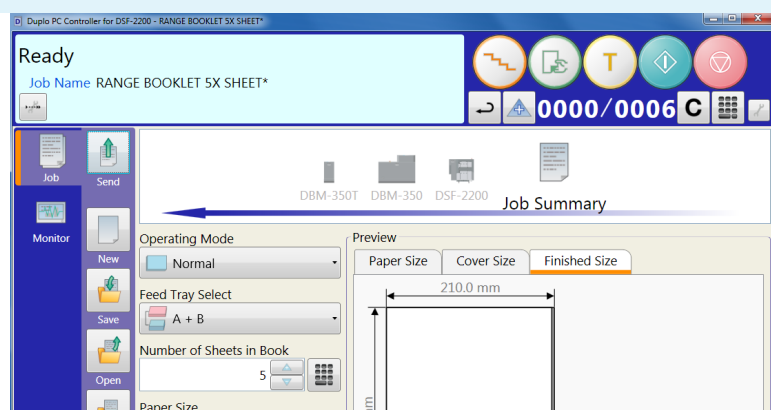


Manage and control system from one central PC interface

Personalised and high-value documents



All-round sheet separation



PC Controller



### DSF-2200 SHEET FEEDER

Although it is common for a digital press to produce a complete job ready collated in sequential order, many presses will slow down when the weight of paper changes considerably - to allow the engine to adjust to the correct temperature - or when a preprinted cover is inserted to the paper path. Two paper feed trays in the DSF-2200 allow the combination of main content pages with covers that have been offset printed, printed on a separate digital press, UV coated or laminated.



To support the wide range of media and digital press types now available, the feed trays feature front and side air separation, ultrasonic double feed detection, and an anti-static device as standard to tackle the common effects of heat, curl and static electricity. Unlike feeding systems using a single vacuum drum, the Duplo has a large feed head using multiple belts that lift and feed the sheets accurately and quickly.



### DBM-350/T BOOKLETMAKER

Duplo's fully automatic, mid-range DBM- 350 Bookletmaker meets the needs of a busy digital print environment conscious of budget expenditure, but needing to produce a broad range of quality material. Typical production is a wide variety of booklet sizes of A4, A5, A6, A5 landscape and custom sizes of up to 20 sheets. Hand feeding is also possible.



Stitching heads provide for a heavier duty cycle and lower running costs compared to staples. Loop form stitches are also possible, allowing the booklet to be filed in a ring binder. An integrated spine press creates flatter books for a better finish.



One fore-edge trim creates a final neat finish to the booklet.

### STANDARD FEATURES



**PC Controller:** Create, save and recall multiple programmes through a Microsoft Windows PC based operator interface.

**Active Antistatic:** Removes static from digitally printed sheets, improving feeding and finished book quality.

**Ultrasonic Double Sheet Detection:** Accurately detects double sheets, stopping the process before entering the system and causing errors.

**Optical Mark Recognition:** Provides an additional level of security for the operator in case there is a printing error that has caused a sheet to be missing.

**Removable Feed Tray:** Rolls away for easier loading and reduced operator stress.

### OPTIONS



**Barcode Readers:** For additional security and job assurance, the Integrated camera system can read 1D and 2D barcodes, allowing production of booklets with a variable numbers of pages.

**Trail Edge Air Kit:** Air is fed under pressure from the front and side of the stack of sheets to ensure clean separation for feeding; but for long formats and very high levels of static, an additional source is available for the operator to position as necessary.

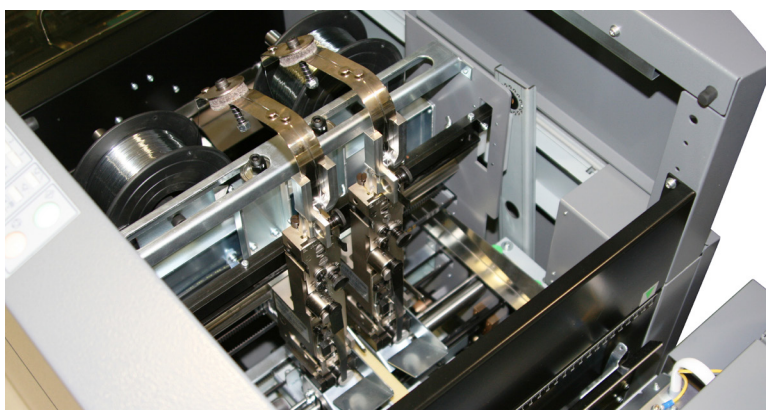
**Pre-Loading Kit:** The lower tray rolls out from the feeder for easy access, but this accessory allows the operator to preload and align sheets to the tray prior to loading into the feeder.

**ASM-350 Square-Spine:** A common favourite for customers in the digital print market, the ASM-350 produces a square perfect-bound effect finish. This can be bypassed when not required.



### SCC Module

The Duplo SCC (Slit/Cut/Crease module) is a unique product designed to (1) trim at the head and foot for a full bleed finish, (2) crease covers to prevent cracking and (3) cut with a cross knife to remove transverse borders. The SCC will simplify and enhance productivity by enabling the system to accept sheets directly from a press and output a complete finished booklet. Additionally, the CCD scanner can correct the sheet-by-sheet image shift to ensure accuracy.



Stitching heads, handfeed and active anti-static



Preloading Tray

# Specifications

## 350 Digital Booklet System

<b>Components</b>	DSF-2200 Sheet Feeder DBM-350 Bookletmaker DBM-350T Trimmer PC control software
<b>Dimensions (L x W x H)</b>	3.1 x 0.75 x 1.03 metres (minimum access at rear 0.6m)
<b>Weight</b>	DSF-2200 115 kg DBM-350 210 kg DBM-350T 70 kg Trail Edge Air Kit 12 kg Preloading Kit 15 kg
<b>Power</b>	230 VAC , 50 Hz , 4 A
<b>Paper capacity</b>	Main feed tray 200 mm media stack height Auxiliary feed tray 65 mm
<b>Paper weight</b>	60 to 300 gsm
<b>Saddle stitched booklets</b>	Length : 200 to 460 mm Width : 148 to 320 mm (105 with small booklet kit)
<b>Booklet output</b>	Length : 85 to 230 mm (100 to 230 mm when small booklet kit installed) (20mm max fore edge trim) Width : 105 to 320 mm
<b>Side stitched documents (with side stitch kit)</b>	Length : 200 to 216 mm Width : 257 to 297 mm
<b>Stitch &amp;/or fold capacity</b>	20 sheets x 80 gsm

## Options for DBM-350

<b>Corner stitch kit</b>	For side or corner stitching
<b>Small booklet kit</b>	
<b>Hohner stitching heads</b>	

## Options for ASM-350

<b>Produces square spine finish</b>	
<b>Booklet sizes</b>	Length : 80 to 250 mm Width : 120 to 350 mm Thickness : 1mm to 6.5 mm
<b>Dimensions</b>	Replaces delivery conveyor with same overall length
<b>Weight</b>	132 Kg
<b>Power</b>	230 VAC, 50 Hz, 3 A

## Standard Features

<b>Feeding System</b>	Belt suction, top feed, air separation from fan and pumps
<b>Microsoft Windows-based graphical user interface</b>	Job programming, save and recall, automated set-up
<b>Standard features</b>	OMR end of set mark reader, Ultrasonic double sheet detection, Hand feeding, Active anti-static bar.

## Options for DSF-2200

<b>Bar code reader kit</b>	Fits two trays. 1D & 2D codes supported 39, 93, 128, 2of5, Datamatrix
<b>Trail Edge Air Kit</b>	
<b>Preloading Tray Kit</b>	

## Optional SCC (Slit/Cut/Crease) Module

<b>Processing Modes</b>	Slitting, Creasing & Cutting Slitting head & foot: cover only or all sheets Creasing: cover only or all sheets Cutting: lead & tail, cover only By-pass all sheets
<b>Papper Grammage</b>	Upper unit (By-pass) up to 157 gsm Lower unit (Slit/Cut/Crease) up to 300 gsm
<b>Flat Sheet Sizes</b>	Max 356mm (W) x 500mm (L) Min 120mm (W) x 200mm (L)
<b>Slitting (Head &amp; Foot)</b>	Head edge: 4 to 25mm Foot edge: 4 to 25mm
<b>Cutting (Lead &amp; Tail)</b>	Lead edge: 4 to 25mm Tail edge: 5 to 25mm
<b>Crease Positions</b>	Greater than 80mm from lead or trail edge 1 crease per sheet
<b>CCD Scanner</b>	Automatic image drift correction
<b>Power Supply</b>	Single Phase, 240V, 50Hz, 120W, 0.6A
<b>Dimensions - Net Weights</b>	1320mm (W) x 610mm (D) x 810mm (H) - 187 kg

## Duplo International Limited

Automated Precision House  
Hamm Moor Lane  
Addlestone  
Surrey KT15 2SD

Tel +44(0) 1932 263 900 - Fax +44(0) 1932 263 901  
info@duplointernational.com  
www.duplointernational.com

Windows is a registered trademark of Microsoft Corporation in the United States and other countries.

Duplo is a trade mark of the Duplo Corporation.

Duplo has a policy of continuous improvement and reserves the right to amend the above specification without prior notice

Production rates are based on optimal operating conditions and may vary depending on stock and environmental conditions.

As part of our continuous product improvement program, specifications are subject to change without notice.



Ref: DBS350/04/17